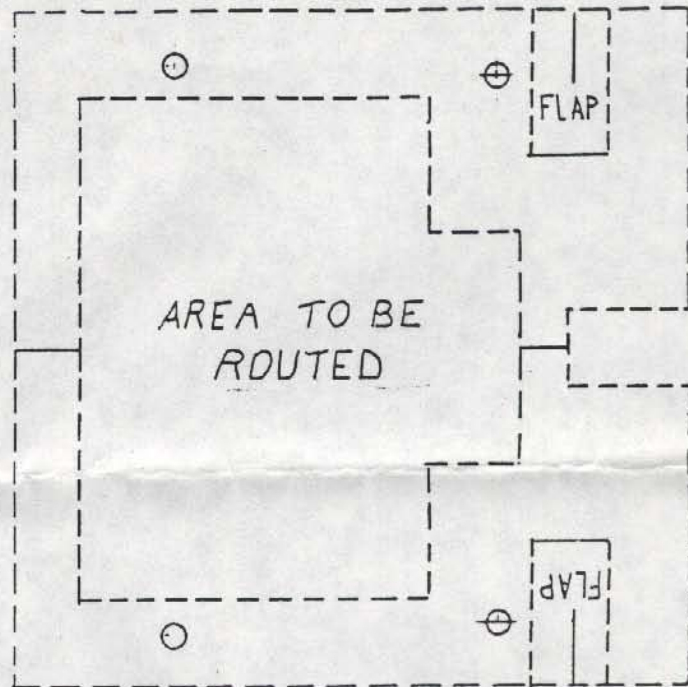


KAHLER™ FLYER™ TREMOLO MOUNTING INSTRUCTIONS

Congratulations on your purchase of the most versatile tremolo bridge system in the world -- a Kahler. Installed properly, this device will give you years of great performance. So, read this entire instruction sheet very carefully before beginning to assure proper-accurate installation of your Kahler.

- 1) Before removing your existing bridge assembly, place a strip of masking tape on the surface of the guitar, beneath the strings, just in front of the bridge. (See Figure 1)
- 2) Carefully make a centering mark on the tape between the center two strings (that is, 3rd and 4th strings or d and g strings). Make the mark with a ball point pen by holding the pen perpendicular to the surface of the guitar scribbling back and forth from string to string. Grip the pen close to the strings for most accuracy. (See Figure 2)
- 3) Carefully remove bridge from guitar and retract ground wire back into control cavity.
- 4) Cut out Flyer routing template along dotted lines. Cut as precisely as possible.
- 5) Fold up flaps on Flyer template as shown in Figure 3. Be careful to fold straight along fold line.
- 6) Align template on surface of guitar so that centering mark on masking tape lines up in center of centering notch of template. (See Figure 3)
- 7) Next, align template on guitar surface so that line on each flap of template is the same distance from the 12th fret as the nut is from the 12th fret. Be sure template is not crooked. (See Figure 4)
- 8) Carefully scribe guitar surface along inside perimeters of template with sharp object. (NOTE: a clean, sharp line here will prevent paint chipping during routing.) Also mark screw holes.
- 9) Route area with 3/8" diameter (or smaller) bit, 1" deep in large rectangular section, 1/2" deep in smaller rectangular section. Drill mounting holes 1" deep with a 3/32" bit.
- 10) Run ground wire into one of front screw holes.
- 11) Screw Flyer into place with mounting screws supplied. A drop of liquid hand or dish soap on screw threads will make them easier to insert.



HOW TO FIT THE KAHLER™ STRING LOCK

- 1) Neck styles as in figure 1 will most likely require a shim or spacer (this being of approximately 1/8" plastic or a similar hard substance) under string lock to provide the right string angle from the nut to string lock to ensure correct operation.
- 2) On guitars with a bullet-type truss rod adjustment, it will be necessary to modify the bullet. Simply unscrew counter clockwise to remove and grind off approximately 1/4". Then drill a small hole 3/32" horizontally and vertically through (for adjustment with string lock in place) and replace.
- 3) On guitars with neck style shown in figure 3 mount string lock directly on headstock and trim off end of truss rod bell cover to butt up to string lock.
- 4) NOTE: Overall best string lock position is as close to the nut as possible and with a slight string angle from nut down to string lock.

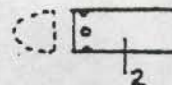
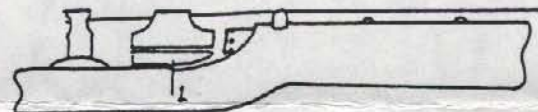


FIGURE #1

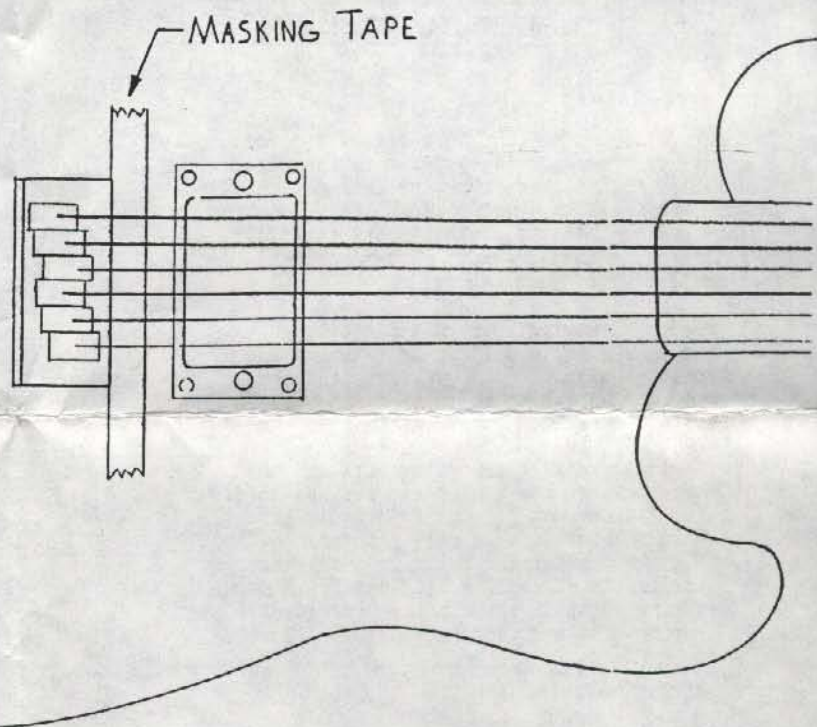


FIGURE #2

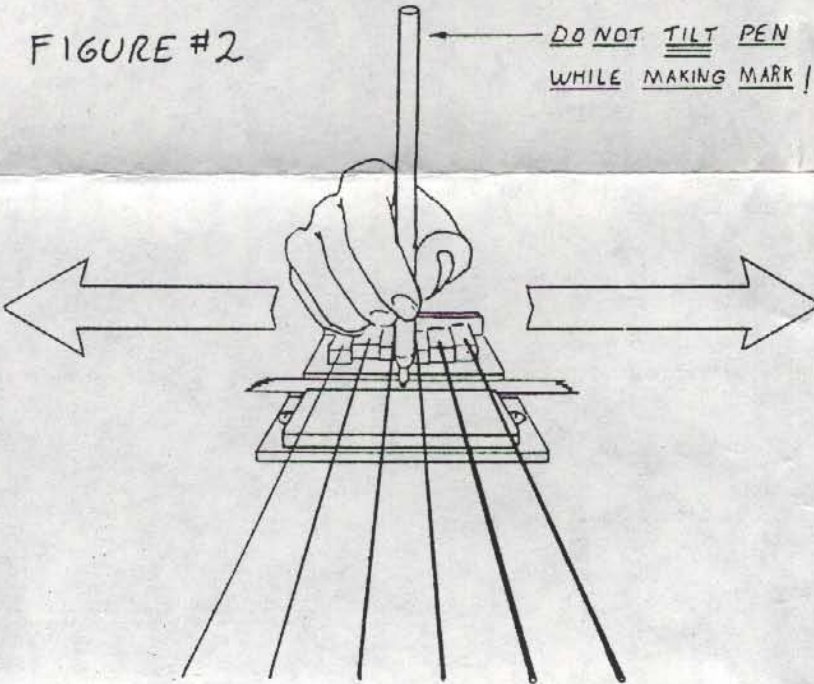


FIGURE #3

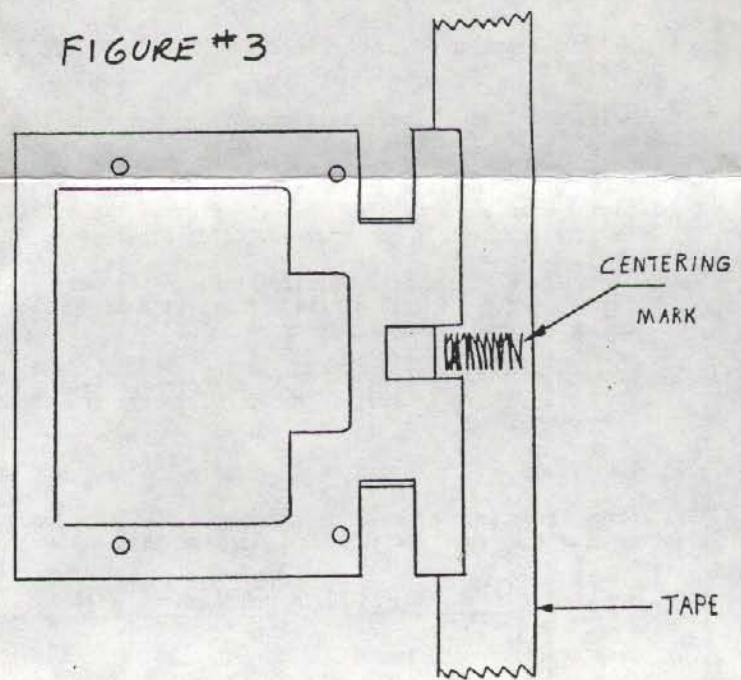


FIGURE #4

